

# Reshum phiriri

This is an old traditional Nepali tune that gets played a whole lot in Nepal. It is in 4/4 time. It is a Nepali love song basically about missing one's true love who is so far away on the other side of the mountains. It is basically two parts, but often has interlude parts added. An A Part, which goes with the chorus and a B Part that goes with the verses are the main parts. There is also a one line interlude line here in this arrangement. Many musicians may add extra interlude parts as well as the two parts that go along following how the words would be sung. Those extra parts can change a good bit depending on who is playing it.

interlude line



chorus part

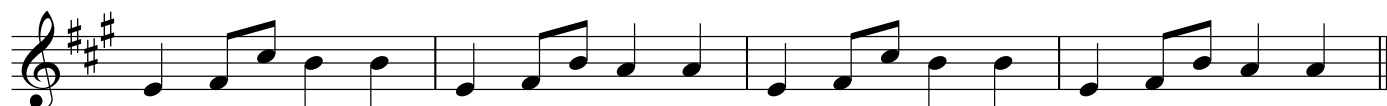


## Reshum phiriri

### Cultural note about Nepali songs-

A Nepali musician may often choose to play the last line of a chorus part two times in a row. Also, sometimes a drummer may signal the last time through a tune by kicking up the tempo.

interlude line



verse part



chorus part

